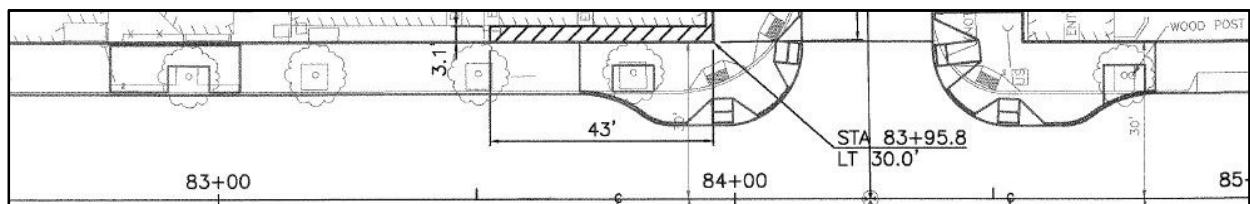




Seattle Department of Transportation

The Americans with Disabilities Act (ADA) Transition Plan for the Seattle Public Right-of-Way

Appendix 5.6b: 2019 Seattle Streetcar ADA Assessment



Location: S Charles St Streetcar Maintenance Shop / 7th & Jackson Streetcar Platform

Inspector Name: Mike Shaw, Danial Kahn, XD Liu

Assessment Date: August 7th, 2019

#	Streetcar Attribute	Measurement / Value	
1	Streetcar entry doorway width \geq 32"? <i>CFR Title 49 §38.73</i>	Yes	No
1a	If entry doorway is < 32", what is the width?	N/A	
2	Is the International Symbol of Accessibility displayed on the exterior of each accessible vehicle OR are all vehicles accessible and are not marked by the access symbol? <i>CFR Title 49 §38.73</i>	Yes	No
3	Are there auditory and visual warning signals to alert passengers of closing doors? <i>CFR Title 49 §38.73</i>	Yes	No
4	Is the horizontal gap between platform and car \leq 3"? <i>CFR Title 49 §38.73</i>	Yes ¹	No
4a	If > 3 in, what is the gap measurement?	N/A	
5	Is the height of the vehicle floor within 5/8" of the boarding platform height? <i>CFR Title 49 §38.73</i>	Yes ¹	No
5a	If > 5/8", what is the elevation difference between the vehicle floor and the platform?	N/A	
6	Are there signs that indicate priority seating for persons with disabilities? <i>CFR Title 49 §38.75</i>	Yes ²	No
7	At entrances with steps, are handrail diameter between 1 1/4" and 1 1/2"? <i>CFR Title 49 §38.77</i>	N/A	
7a	Is the clearance between the handrail and the nearest adjacent surface \geq 1 1/2"?	N/A	
8	Within each accessible vehicle, is there a minimum clear width route of 32" from the entry to clear space(s) that may be used by wheelchair or mobility aid users? <i>CFR Title 49 §38.77</i>	Yes	No
8a	Are there a minimum of two clear spaces, measured 30"x48", that may be occupied by a wheelchair or mobility aid user?	Yes	No
8b	Are the clear floor spaces provided in a location that does not restrict the movement of other passengers?	Yes	No
9	Are all floor surfaces, step treads, and places for standees slip resistant? <i>CFR Title 49 §38.79</i>	Yes	No
10	Are all thresholds and step edges painted with a contrasting color, provided for the full width of threshold/step? <i>CFR Title 49 §38.79</i>	Yes	No
11	Is a vehicle lift or a ramp/bridge plate used to access the vehicle? <i>CFR Title 49 §38.83</i>	Ramp/ Bridge Plate	
12	Is a vehicle lift is used for access? If YES, answer the questions below. If NO, skip ahead to question #13. <i>CFR Title 49 §38.83</i>	No	

12a	Can the lift support a load of at least 600 pounds?	N/A	
12b	In the event of power loss, is the lift designed to lower to the ground with an occupant?	N/A	
12c	Are there barriers to prevent the wheels of a wheelchair or mobility aid from rolling off the lift on each side of the platform, and at least 1 ½" high?	N/A	
12d	Is the lift platform free of protrusions over ¼" high?	N/A	
12e	Does the lift platform have a clear width ≥ 28 ½"?	N/A	
12f	Is the lift platform entrance ramp 1:8 maximum slope, for a rise no more than 3"?	N/A	
12g	Is the transition from boarding platform or roadway to ramp ¼" vertical maximum or ½" vertical with a 1:2 beveled slope?	N/A	
12h	Are there handrails provided on two sides of the lift?	N/A	
13	Is a vehicle ramp or bridge plate used for access? If YES, answer the questions below. If NO, skip ahead to question #14. <i>CFR Title 49 §38.83</i>	Yes	
13a	Can the ramp or bridge plate support a load of at least 600 pounds (if 30" or longer) or 300 pounds (if shorter than 30")?	Yes	No
13b	Is the ramp or bridge plate free of protrusions over ¼" high?	Yes	No
13c	Does the ramp or bridge plate have a clear width ≥ 30"?	Yes	No
13d	Is the transition from boarding platform or roadway to bridge plate or ramp ¼" vertical maximum or ½" vertical with a 1:2 beveled slope?	Yes	No
13e	Are there barriers to prevent the wheels of a wheelchair or mobility aid from rolling off the lift on each side of the ramp or bridge plate, and at least 2" high?	Yes ³	No
13f	Is the ramp or bridge plate 1:4 maximum slope, for a rise no more than 3" (OR 1:6 for 6" rise, 1:8 for 9", 1:12 >9")?	Yes	No
13g	What is the slope of the ramp or bridge plate and the elevation difference from the platform to the vehicle floor?	11%, 4" rise (≤ 1:6, ≤ 6" rise)	
13h	Is the gap between the boarding platform and ramp/bridge plate ≤ 5/8"?	N/A	
13i	Is the gap between the ramp/bridge plate and the vehicle ≤ 5/8"?	N/A	
14	Is the vehicle equipped with an interior public address system that announces transit stations and/or provides passenger information? <i>CFR Title 49 §38.87</i>	Yes	No
15	Is the rail platform slope ≤ 2%? <i>2010 ADA Standards §810.5</i>	Varies ⁴	
16	Does the boarding platform have detectable warning for the full length of the public use area of the platform (where not protected by screens or guards)? <i>2010 ADA Standards §810.5</i>	Yes	No
17	Additional Comments	¹ The bridge plate provides an accessible connection to the streetcar free of gaps or noncompliant vertical level changes. ² The accessible seating areas are indicated by the International Symbol of Accessibility. ³ The bridge plate includes barriers on each side, 2" nominal, to prevent a user from rolling off the lift. The barriers are retracted and not generally in use, but are available upon request. ⁴ The streetcar platforms were constructed on existing roadways. The slope of the platforms generally matches the established roadway grade. This allowance is consistent with PROWAG guidance for sidewalks in the public right-of-way. The cross slopes generally do not exceed 2%.	

Figures to Part 38

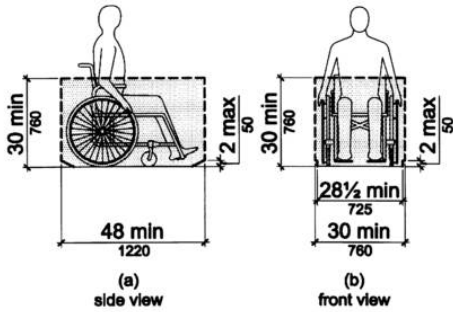


Figure 1
Wheelchair or Mobility Aid Envelope

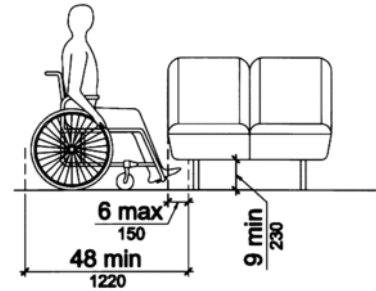


Figure 2
Toe Clearance Under a Fixed Element

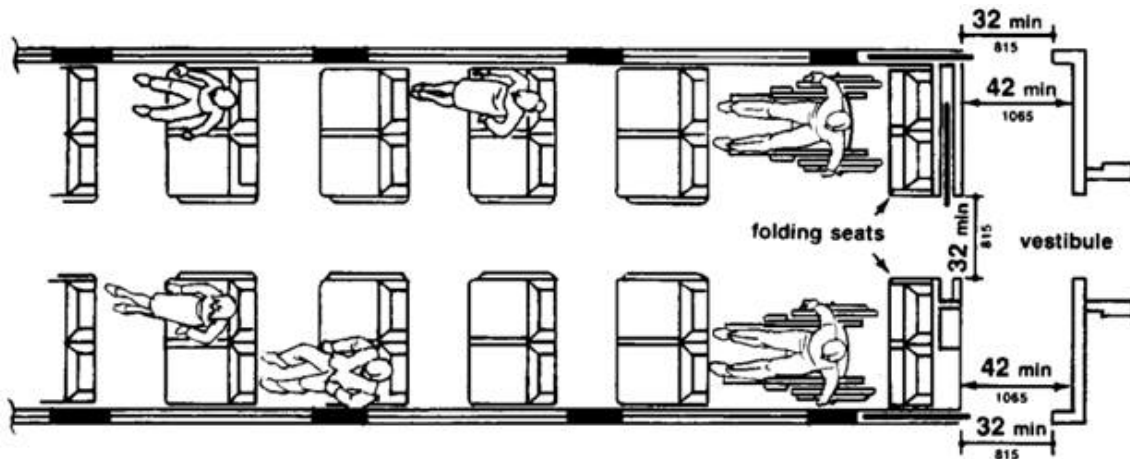


Fig. 3
Commuter Rail Car (without restrooms)