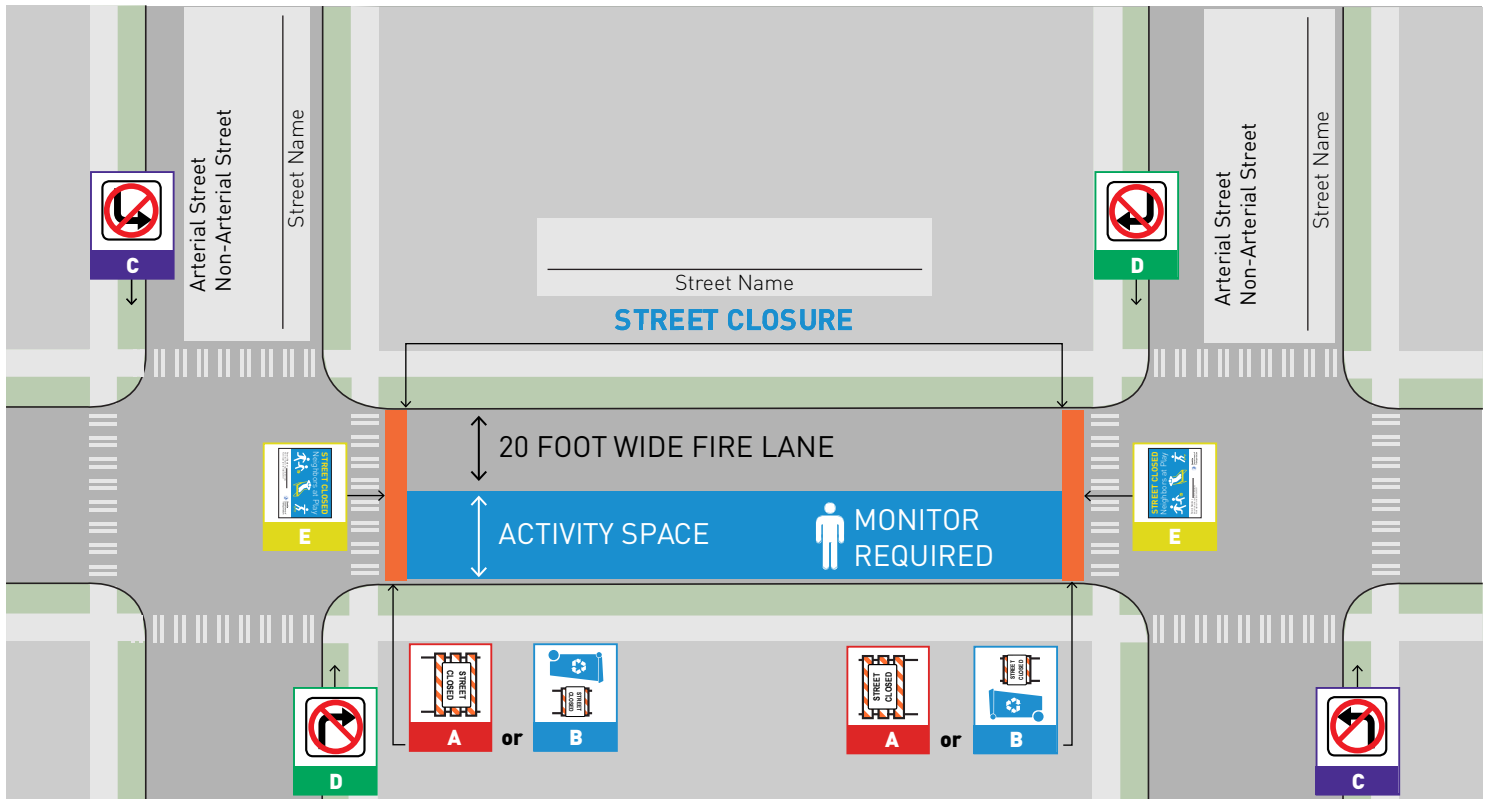


PLAY STREETS | STREET CLOSURE TEMPLATE



Use Type III barricades at arterial cross streets

4 feet min.
Variable max.

5 feet min.

STREET CLOSED
R11-2
3 feet x 2 feet

Type III Barricade
Street closed sign mounted to a Type III barricade

A

Use Type II barricades at non-arterial cross streets

2 feet min.


3 feet min.


STREET CLOSED
R11-2
3 feet x 2 feet

Type II Barricade
Street closed sign mounted to a Type II barricade or garbage / recycling bin

B

No Left / Right Turn Sign
Must be used to help guide traffic at an arterial intersection



R3 - 2
2 feet x 2 feet


R3 - 1
2 feet x 2 feet

C **D**

Informational Sign
Must be placed in the middle of the center of the street at the ends of the block

STREET CLOSED



Copyright © Government of California 2018. All rights reserved. State Department of Transportation

E