

# RECYCLING PROGRAMS

4th Quarter 2011

Seattle Public Utilities, Economic Services Section

Report Date: January 31, 2012

Phone: (206) 684-4143

## Tonnage Breakdown

### Single Family Tons (Without Contaminants)

Q4 2011:	14,236 Tons	5.0%	decrease vs. same period in 2010
Cumulative Single Family:	57,234 Tons	0.6%	decrease vs. same period in 2010

### Multi Family Tons (Without Contaminants)

Q4 2011:	4,882 Tons	6.6%	decrease vs. same period in 2010
Cumulative Multi Family:	18,544 Tons	5.1%	decrease vs. same period in 2010

### Business Tons (Includes Contaminants)

Q4 2011:	662 Tons	8.1%	decrease vs. same period in 2010
Cumulative Small Business:	2,690 Tons	7.1%	decrease vs. same period in 2010

## Selected Statistics for Q4 2011

Average Pounds Recyclables collected per Household per Month

Single Family:	65.5	(154,457 households)
Multi Family:	27.2	(122,372 households)

## Service Citywide:

Recycling service for single family households occurs every other week on the same day as garbage collection service. Beginning January 2005, for all materials except plastics, there is a recycling requirement which bans recyclables from being disposed of in garbage containers. Beginning January 2006, the recycling requirement is being enforced by not collecting garbage cans or dumpsters which contain more than 10% recyclables. Apartment managers are subject to a fine for repeated violation of the ban on recyclables in garbage dumpsters. Exemptions are granted when there is lack of space for recycle containers.

Apartment Buildings with 5 or more units are considered part of the Multi Family Recycling Program for purposes of tracking services. Apartment buildings can choose toter or dumpster style service.

The Business Recycling Program is available to businesses with a Seattle commercial garbage account and is limited to two recycling carts, collected every other week. The Business Recycling Program is free to qualifying businesses.

## Materials Citywide:

Newspaper, mixed paper, glass, aluminum, tin, plastic bottles, ferrous metals, plastic bags (grocery bags), plastic containers (dairy/yogurt containers), milk cartons and juice boxes. In addition, up to 2 gallons of used motor oil may be set out in separate 1 gallon containers each collection day. Electronics and appliances will be picked up curbside and recycled safely upon request for a fee. (\$20 per electronic item, \$30 per appliance, \$38 per appliance containing CFC's)

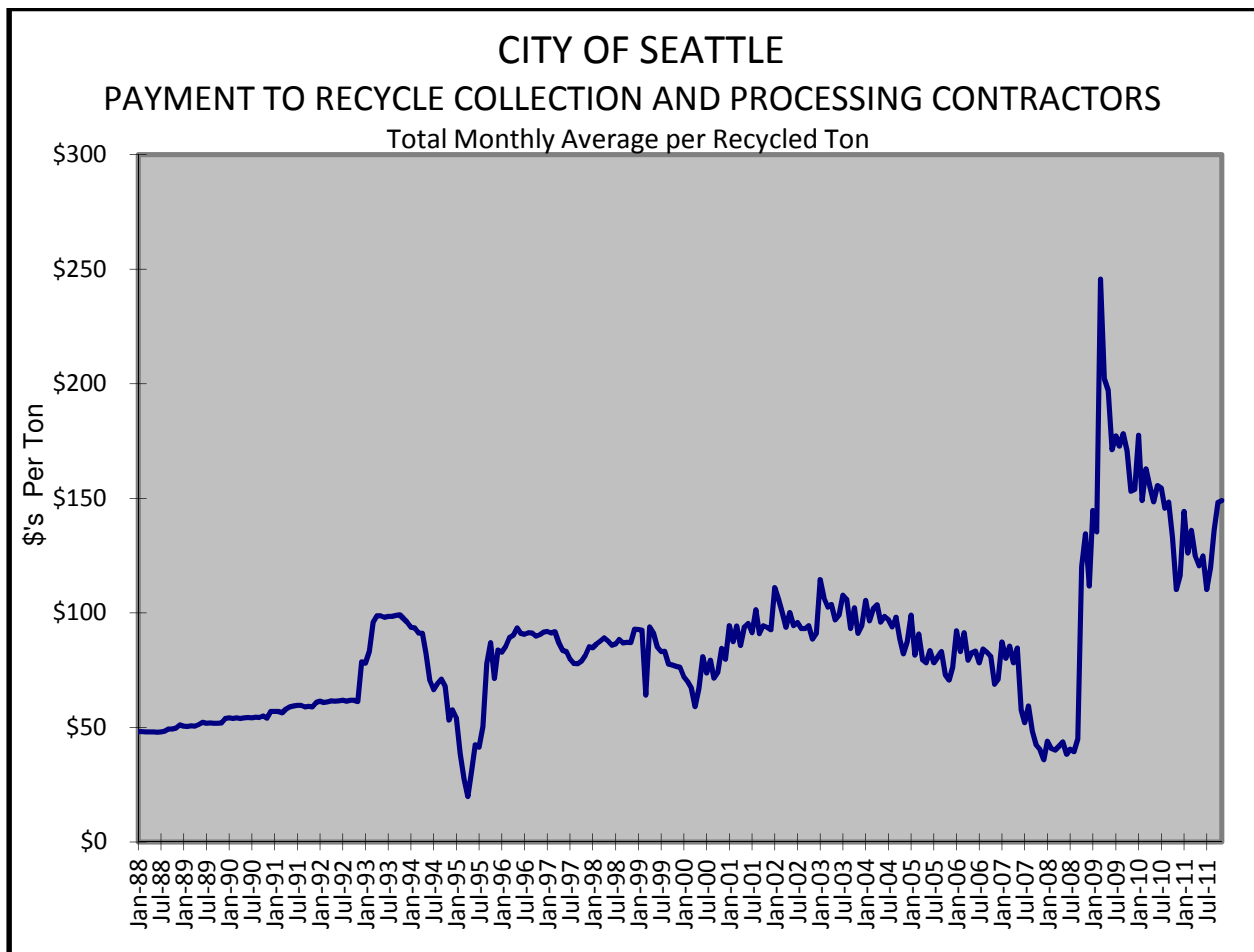
## Program Costs<sup>1</sup>

### Citywide Yearly Cumulative Average Cost/Ton

1988	\$ 48.55	1995	\$ 50.27	2002	\$ 96.46	2009	\$171.38
1989	\$ 51.33	1996	\$ 89.15	2003	\$100.62	2010	\$148.54
1990	\$ 54.20	1997	\$ 84.59	2004	\$ 95.82	2011	\$129.41
1991	\$ 58.28	1998	\$ 86.88	2005	\$ 81.72		
1992	\$ 61.41	1999	\$ 86.39	2006	\$ 81.44		
1993	\$ 93.25	2000 <sup>2</sup>	\$ 72.78	2007	\$ 64.83		
1994	\$ 77.38	2001	\$ 91.64	2008	\$ 54.28		

### **Avg. Cost for 4th Quarter 2011: \$144.67**

*(Payment to contractors falls when market prices for recyclable materials increase.)*



<sup>1</sup> Figures shown reflect the average amount SPU pays the recycling processing and collection contractors, which is a total contract price plus (or minus) a variable amount determined by market prices. In other words, the figures reflect the cost to the city of collection and sorting (including payment for disposal of contaminants). Revenue received for sale of the materials belongs to the processing contractor and as such these cost figures should not be construed as the total cost of recycling; figures also do not include costs such as liquidated damages, SPU program administration or public education.

<sup>2</sup> As of April 2000 recycling program costs include curbside (single family) apartment (multi-family) and small business programs. Prior to April 2000, the costs shown are only for the curbside program.

SINGLE FAMILY CAN TONS COLLECTED (Includes contaminants)						SINGLE FAMILY CAN CUSTOMER DATA						
Yr	Mo	Cleanscapes	Waste Management	Total SF Tons	Cumulative SF Tons	CS Curb Bldgs	WM Curb Bldgs	Total Curb Bldgs	CS Curb Households	WM Curb households	Total Curb Households	LBS PER HOUSEHOLD
2010	1	2,351.4	3,093.4	5,444.9	5,444.9	57,194	89,708	146,902	60,299	92,995	153,294	71.0
2010	2	1,916.6	2,540.6	4,457.2	9,902.0	57,211	89,716	146,927	60,320	93,007	153,327	58.1
2010	3	2,220.7	2,887.7	5,108.4	15,010.4	57,271	89,767	147,038	60,409	93,058	153,467	66.6
2010	4	2,099.7	2,610.6	4,710.4	19,720.8	57,338	89,838	147,176	60,475	93,132	153,607	61.3
2010	5	2,067.1	2,808.0	4,875.1	24,595.9	57,402	89,955	147,357	60,544	93,228	153,772	63.4
2010	6	2,238.6	2,914.9	5,153.5	29,749.4	57,431	90,015	147,446	60,563	93,275	153,838	67.0
2010	7	2,196.2	2,941.6	5,137.7	34,887.2	57,438	90,070	147,508	60,582	93,321	153,903	66.8
2010	8	2,231.4	2,854.5	5,085.9	39,973.0	57,445	90,062	147,507	60,595	93,313	153,908	66.1
2010	9	2,263.5	2,867.8	5,131.3	45,104.3	57,470	90,052	147,522	60,612	93,299	153,911	66.7
2010	10	2,066.6	2,684.0	4,750.6	49,855.0	57,449	89,999	147,448	60,583	93,247	153,830	61.8
2010	11	2,222.7	2,859.4	5,082.1	54,937.0	57,452	89,976	147,428	60,597	93,219	153,816	66.1
2010	12	2,644.6	3,387.6	6,032.2	60,969.2	57,456	89,991	147,447	60,515	93,222	153,737	78.5
2011	1	2,359.4	3,308.9	5,668.3	5,668.3	57,437	89,947	147,384	60,726	93,191	153,917	73.7
2011	2	1,897.9	2,482.1	4,380.0	10,048.3	57,450	89,944	147,394	60,739	93,173	153,912	56.9
2011	3	2,212.1	2,912.2	5,124.3	15,172.5	57,477	90,013	147,490	60,745	93,249	153,994	66.6
2011	4	2,056.4	2,930.2	4,986.6	20,159.1	57,518	90,112	147,630	60,788	93,372	154,160	64.7
2011	5	2,196.5	2,866.0	5,062.5	25,221.6	57,555	90,206	147,761	60,824	93,470	154,294	65.6
2011	6	2,226.5	2,874.3	5,100.8	30,322.4	57,606	90,289	147,895	60,876	93,556	154,432	66.1
2011	7	2,049.5	2,739.1	4,788.6	35,111.0	57,614	90,334	147,948	60,889	93,602	154,491	62.0
2011	8	2,312.2	3,065.9	5,378.1	40,489.1	57,647	90,378	148,025	60,915	93,635	154,550	69.6
2011	9	2,192.8	2,847.6	5,040.4	45,529.5	57,661	90,396	148,057	60,937	93,657	154,594	65.2
2011	10	2,064.5	2,661.6	4,726.1	50,255.5	57,643	90,330	147,973	60,927	93,597	154,524	61.2
2011	11	2,293.0	2,907.1	5,200.1	55,455.6	57,594	90,288	147,882	60,890	93,562	154,452	67.3
2011	12	2,324.7	2,823.9	5,148.6	60,604.2	57,579	90,295	147,874	60,880	93,577	154,457	66.7
TOTAL CITY SINGLE FAMILY TONNAGE BY MATERIAL DATA (Estimated from periodic composition studies)												
	FERROUS							CONTAM- INANTS	TOTAL w/cont	TOTAL w/o cont	AVG LBS PER HOUSEHOLD	
	ALUM	METAL	GLASS	MIXED PAPER	NEWS PAPER	PLASTICS	TIN					
2011 SF Total:	586.4	292.1	10,839.2	29,598.4	12,332.0	2,787.3	798.5	3,370.3	60,604.2	57,233.9	65.5	
2010 SF Total:	590.0	293.9	10,904.5	29,776.6	12,406.3	2,804.1	803.3	3,390.6	60,969.2	57,578.6	66.1	
2009 SF Total:	607.0	302.4	11,219.1	30,635.8	12,764.2	2,885.0	826.5	3,488.5	62,728.5	59,240.0	68.3	
2008 SF Total:	329.9	150.8	11,361.8	26,594.3	21,475.4	1,518.6	525.5	1,270.4	63,226.7	61,956.3	68.8	
2007 SF Total:	352.6	161.2	12,132.4	28,372.8	22,919.0	1,621.1	561.4	1,354.2	67,474.7	66,120.5	72.6	
2006 SF Total:	348.7	159.4	11,996.9	28,048.8	22,659.4	1,602.9	555.2	1,338.5	66,709.9	65,371.5	72.5	
2005 SF Total:	342.4	156.5	11,770.0	27,496.3	22,219.5	1,572.2	545.0	1,311.2	65,413.1	64,101.9	71.5	
2004 SF Total:	414.1	88.5	10,929.5	26,217.6	21,932.1	1,452.8	725.4	2,542.2	64,302.2	61,760.0	69.8	
2003 SF Total:	400.1	85.5	10,560.2	25,333.0	21,192.3	1,403.8	700.9	2,456.8	62,132.5	59,675.7	67.7	
2002 SF Total:	398.4	84.7	10,518.2	25,216.8	21,092.5	1,397.5	698.0	2,440.5	61,846.6	59,406.1	67.9	
2001 SF Total:	397.4	84.2	10,493.3	25,149.3	21,034.7	1,393.8	696.3	2,431.5	61,680.4	59,249.0	66.6	
2000 SF Total:	490.2	85.5	11,963.1	24,986.6	22,499.7	1,442.1	747.8	2,432.2	64,410.0	62,215.0	69.9	
1999 SF Total:	799.6	81.8	12,969.2	22,870.2	23,947.3	727.3	1,439.9	1,026.8	63,862.0	62,835.2	70.6	
1998 SF Total:	762.8	78.2	12,387.9	21,877.6	22,868.9	694.6	1,369.7	993.3	61,032.7	60,039.4	67.5	
1997 SF Total:	741.0	75.9	12,029.0	21,233.7	22,208.0	674.5	1,331.8	960.6	59,254.5	58,293.9	67.5	
1996 SF Total:	693.1	71.0	11,249.4	19,855.4	20,769.0	630.8	1,245.9	897.5	55,412.0	54,514.5	61.3	
1995 SF Total:	707.7	72.5	11,490.8	20,288.7	21,213.5	644.3	1,271.3	919.6	56,608.4	55,688.7	63.1	
1994 SF Total:	696.3	71.3	11,307.4	19,967.5	20,874.6	634.0	1,250.6	905.9	55,707.7	54,801.8	61.6	
1993 SF Total:	652.8	66.9	10,606.8	18,742.1	19,579.3	557.5	1,171.0	854.4	52,268.0	51,376.4	57.7	
1992 SF Total:	862.8	NA	10,702.0	17,610.6	17,412.9	288.8	1,409.9	1,259.6	49,546.6	48,287.0	54.2	
1991 SF Total:	684.6	NA	9,540.4	19,537.8	16,103.2	268.3	1,423.7	1,004.4	48,562.4	47,558.0	53.4	
1990 SF Total:	895.1	NA	9,096.9	17,201.8	17,373.0	163.1	1,306.8	685.9	46,722.6	46,036.7	51.3	
1989 SF Total:	433.2	NA	8,671.4	15,149.6	15,115.6	88.9	1,279.9	121.0	40,859.6	40,738.6	46.2	
1988 SF Total:	242.3	NA	4,833.6	7,739.7	10,481.4	0.0	649.2	39.4	23,985.6	23,946.2	31.9	
TOTAL CITY SINGLE FAMILY PERCENTAGE BREAKDOWN BY MATERIAL (Estimated from periodic composition studies)												
	FERROUS							CONTAM- INANTS	TOTAL			
	ALUM	METAL	GLASS	MIXED PAPER	NEWS PAPER	PLASTICS	TIN					
2009-2011 Avg:	1.0%	0.5%	17.9%	48.8%	20.3%	4.6%	1.3%	5.6%	100%			
2005-2008 Avg:	0.5%	0.2%	18.0%	42.0%	34.0%	2.4%	0.8%	2.0%	100%			
2001-2004 Avg:	0.6%	0.1%	17.0%	40.8%	34.1%	2.3%	1.1%	3.9%	100%			
2000 Avg:	0.8%	0.1%	18.6%	38.8%	34.9%	2.2%	1.2%	3.8%	100%			
1993-1999 Avg:	1.2%	0.1%	20.3%	35.9%	37.5%	1.1%	2.2%	1.6%	100%			
1992 Avg:	1.7%	NA	21.6%	35.5%	35.1%	0.6%	2.8%	2.5%	100%			
1991 Avg:	1.4%	NA	19.6%	40.2%	33.2%	0.6%	2.9%	2.1%	100%			
1990 Avg:	1.9%	NA	19.5%	36.8%	37.2%	0.3%	2.8%	1.5%	100%			
1989 Avg:	1.1%	NA	21.2%	37.1%	37.0%	0.2%	3.1%	0.3%	100%			
1988 Avg:	1.0%	NA	20.2%	32.3%	43.7%	0.0%	2.7%	0.2%	100%			

1 Single Family refers to customers that receive can garbage service. Tonnage data includes contaminants.

MULTI FAMILY TONS COLLECTED (Includes contaminants)						MULTIFAMILY CUSTOMER DATA <sup>1</sup>								
Yr	Mo	Cleanscapes	Waste Management	Total Apt Tons	Cumulative Apt Tons	Cleanscapes Apt Bldgs	WM Apt Bldgs	Total Apt Bldgs	CS Apt Units	WM Apt Units	Total Apt Units	Units/Bldg	Lbs/ Bldg	Lbs/ Unit
2010	1	1,081.8	617.3	1,699.1	1,699.1	3,013	2,201	5,214	78,745	38,361	117,106	22	651.8	29.0
2010	2	931.7	585.7	1,517.4	3,216.5	3,016	2,203	5,219	78,818	38,380	117,198	22	581.5	25.9
2010	3	1,068.4	685.5	1,753.9	4,970.4	3,015	2,204	5,219	79,000	38,398	117,398	22	672.1	29.9
2010	4	1,024.8	657.3	1,682.1	6,652.5	3,018	2,206	5,224	79,386	38,513	117,899	23	644.0	28.5
2010	5	1,012.3	628.3	1,640.6	8,293.1	3,018	2,206	5,224	79,368	38,837	118,205	23	628.1	27.8
2010	6	1,071.7	687.9	1,759.6	10,052.7	3,019	2,208	5,227	79,434	38,950	118,384	23	673.3	29.7
2010	7	1,071.0	674.9	1,745.9	11,798.6	3,023	2,216	5,239	79,294	39,137	118,431	23	666.5	29.5
2010	8	1,070.1	675.9	1,746.0	13,544.6	3,026	2,217	5,243	79,491	39,146	118,637	23	666.0	29.4
2010	9	1,118.4	714.6	1,832.9	15,377.5	3,024	2,220	5,244	79,357	39,166	118,523	23	699.1	30.9
2010	10	1,032.9	671.5	1,704.3	17,081.8	3,024	2,223	5,247	79,832	39,789	119,621	23	649.6	28.5
2010	11	1,127.7	716.3	1,844.0	18,925.8	3,022	2,222	5,244	79,491	39,726	119,217	23	703.3	30.9
2010	12	1,237.1	835.9	2,073.0	20,998.8	3,023	2,225	5,248	79,233	39,739	118,972	23	790.0	34.8
2011	1	1,097.4	451.2	1,548.6	1,548.6	3,053	2,232	5,285	81,115	40,115	121,230	23	586.0	25.5
2011	2	940.6	594.5	1,535.1	3,083.7	3,060	2,236	5,296	81,631	40,144	121,775	23	579.7	25.2
2011	3	1,121.1	685.5	1,806.6	4,890.2	3,067	2,236	5,303	81,774	40,412	122,186	23	681.3	29.6
2011	4	998.9	376.0	1,374.9	6,265.1	3,066	2,236	5,302	81,422	40,542	121,964	23	518.6	22.5
2011	5	1,051.0	651.9	1,702.9	7,968.0	3,062	2,240	5,302	81,231	40,886	122,117	23	642.3	27.9
2011	6	1,058.7	648.4	1,707.1	9,675.0	3,060	2,237	5,297	81,238	40,854	122,092	23	644.5	28.0
2011	7	973.8	612.8	1,586.6	11,261.6	3,062	2,242	5,304	81,290	40,959	122,249	23	598.3	26.0
2011	8	1,092.7	665.7	1,758.4	13,020.0	3,067	2,242	5,309	81,295	40,984	122,279	23	662.4	28.8
2011	9	1,029.9	638.8	1,668.7	14,688.7	3,073	2,247	5,320	81,568	41,095	122,663	23	627.3	27.2
2011	10	994.1	633.8	1,627.9	16,316.5	3,075	2,226	5,301	81,404	40,788	122,192	23	614.2	26.6
2011	11	1,071.8	689.0	1,760.8	18,077.3	3,073	2,230	5,303	81,506	40,837	122,343	23	664.1	28.8
2011	12	1,057.3	802.1	1,859.5	19,936.8	3,074	2,227	5,301	81,521	40,851	122,372	23	701.6	30.4

TOTAL MULTIFAMILY PERCENTAGE BREAKDOWN BY MATERIAL (Estimated from periodic composition studies)													
	FERROUS							CONTAM-		TOTAL		Avg	
	ALUM	METAL	GLASS	MIXED PAPER	NEWSPAPER	PLASTICS	TIN	INANTS	w/cont	w/o cont	Lbs/Bldg	Lbs/Unit	
2011 MF Total:	147.8	56.5	3,407.9	10,637.9	3,394.3	713.6	186.3	1,392.6	19,936.8	18,544.2	626.7	27.2	
2010 MF Total:	155.7	59.5	3,589.4	11,204.5	3,575.1	751.6	196.2	1,466.8	20,998.8	19,532.0	668.8	29.6	
2009 MF Total:	143.8	54.9	3,315.7	10,350.2	3,302.5	694.3	181.3	1,355.0	19,397.8	18,042.8	621.9	28.1	
2008 MF Total:	90.4	106.2	3,854.6	9,275.5	6,014.2	441.0	150.3	529.8	20,461.9	21,951.6	626.9	28.7	
2007 MF Total:	93.0	109.4	3,964.5	9,539.0	6,186.5	453.6	154.6	544.9	21,045.5	20,500.6	647.0	30.2	
2006 MF Total:	87.1	104.2	3,705.6	8,902.9	5,790.8	424.1	144.6	509.2	19,668.4	19,159.2	605.8	28.8	
2005 MF Total:	79.8	94.5	3,400.4	8,177.0	5,309.0	389.1	132.6	467.3	18,049.7	17,582.4	582.3	27.6	
2004 MF Total:	82.3	30.7	2,690.8	6,638.0	5,556.4	259.6	128.3	464.2	15,850.3	15,386.0	554.1	26.3	
2003 MF Total:	76.8	28.6	2,509.7	6,190.4	5,180.8	242.0	119.6	432.9	14,780.8	14,347.9	532.6	25.6	
2002 MF Total:	71.5	26.6	2,331.1	5,754.6	4,822.7	225.3	111.4	402.5	13,745.6	13,343.1	509.3	24.5	
2001 MF Total:	70.0	26.0	2,282.6	5,636.3	4,725.9	220.7	109.2	394.2	13,465.0	13,070.8	550.7	25.9	
2000 MF Total:	65.0	17.8	2,050.6	5,269.2	4,004.9	179.9	103.5	292.2	11,983.2	11,691.0	497.0	25.0	
1999 MF Total:	68.6	NA	1,908.6	5,647.9	2,763.6	87.3	66.4	111.9	10,654.3	10,542.4	654.7	27.6	
1998 MF Total:	70.2	NA	1,835.2	5,020.4	2,978.4	99.6	106.1	129.0	10,238.8	10,109.8	669.2	28.1	
1997 MF Total:	68.9	NA	1,646.4	4,686.3	2,521.9	87.3	114.5	89.5	9,214.8	9,125.3	639.2	26.8	
1996 MF Total:	69.9	NA	1,527.3	3,296.6	3,041.2	78.7	113.3	61.8	8,188.7	8,126.9	613.5	24.8	
1995 MF Total:	49.6	NA	1,458.3	2,555.7	2,995.5	13.5	120.0	NA	7,192.4	7,192.4	608.2	22.9	
1994 MF Total:	51.3	NA	1,224.6	3,013.2	1,678.1	0.8	111.0	NA	6,079.0	6,079.0	657.8	23.6	
1993 MF Total:	47.0	NA	769.5	2,517.4	435.6	0.3	85.9	NA	3,855.7	3,855.7	646.0	20.2	
1992 MF Total:	3.3	NA	736.2	1,438.5	726.7	NA	68.7	NA	2,973.4	2,973.4	753.3	24.4	
1991 MF Total:	0.9	NA	410.6	661.7	732.7	NA	23.6	NA	1,829.5	1,829.5	733.5	23.4	
1990 MF Total:	NA	NA	228.7	500.8	358.4	NA	6.3	NA	1,094.2	1,094.2	712.1	22.8	
1989 MF Total:	NA	NA	69.9	42.7	192.8	NA	NA	NA	305.4	305.4	NA	NA	

MULTI FAMILY PERCENTAGE BREAKDOWN BY MATERIAL										
	FERROUS							CONTAM-		TOTAL
	ALUM	METAL	GLASS	MIXED PAPER	NEWS PAPER	PLASTIC	TIN	INANTS		
2009-2011 Avg:	0.7%	0.3%	17.1%	53.4%	17.0%	3.6%	0.9%	7.0%	100%	
2005-2008 Avg:	0.4%	0.5%	18.8%	45.3%	29.4%	2.2%	0.7%	2.6%	100%	
2001-2004Avg:	0.5%	0.2%	17.0%	41.9%	35.1%	1.6%	0.8%	2.9%	100%	
2000 Avg:	0.5%	0.1%	17.1%	44.0%	33.4%	1.5%	0.9%	2.4%	100%	
1999 Avg:	0.6%	NA	17.9%	53.0%	25.9%	0.8%	0.6%	1.1%	100%	
1998 Avg:	0.7%	NA	17.9%	49.0%	29.1%	1.0%	1.0%	1.3%	100%	
1997 Avg:	0.7%	NA	17.9%	50.9%	27.4%	0.9%	1.2%	1.0%	100%	
1996 Avg:	0.9%	NA	18.7%	40.3%	37.1%	1.0%	1.4%	0.8%	100%	
1995 Avg:	0.7%	NA	20.3%	35.5%	41.6%	0.2%	1.7%	NA	100%	
1994 Avg:	0.8%	NA	20.1%	49.6%	27.6%	0.0%	1.8%	NA	100%	
1993 Avg:	1.2%	NA	20.0%	65.3%	11.3%	0.0%	2.2%	NA	100%	
1992 Avg:	NA	NA	24.8%	48.4%	24.4%	NA	2.3%	NA	100%	
1991 Avg:	NA	NA	22.4%	36.2%	40.0%	NA	1.3%	NA	100%	
1990 Avg:	NA	NA	20.9%	45.8%	32.8%	NA	0.6%	NA	100%	
1989 Avg:	NA	NA	22.9%	14.0%	63.1%	NA	0.0%	NA	100%	

<sup>1</sup>This data represents apartment customers who are signed up for recycle service.

TOTAL CITY RESIDENTIAL RECYCLING TONS COLLECTED (Includes contaminants)										COMMERCIAL BUSINESS RECYCLE PROGRAM <sup>1</sup>	SPECIAL ITEMS			
Yr	Mo	Waste				Cumulative Tons					MOTOR OIL (Gallons)	ELEC-TRONICS (units)	APPLIANCES (units)	
		Cleanscapes	Management	Total Tons										
2010	1	3,433.2	3,710.8	7,144.0	7,144.0					340.4	219	12	29	
2010	2	2,848.3	3,126.2	5,974.5	13,118.5					248.7	191	13	34	
2010	3	3,289.1	3,573.2	6,862.3	19,980.8					246.2	374	20	39	
2010	4	3,124.6	3,267.9	6,392.5	26,373.3					215.3	338	8	41	
2010	5	3,079.4	3,436.3	6,515.7	32,889.0					216.1	290	12	44	
2010	6	3,310.3	3,602.8	6,913.1	39,802.1					234.6	302	23	58	
2010	7	3,267.2	3,616.5	6,883.6	46,685.7					221.3	263	17	55	
2010	8	3,301.5	3,530.4	6,831.9	53,517.6					220.2	250	5	50	
2010	9	3,381.9	3,582.4	6,964.2	60,481.8					233.6	361	12	31	
2010	10	3,099.5	3,355.5	6,455.0	66,936.8					244.0	282	13	30	
2010	11	3,350.3	3,575.7	6,926.1	73,862.9					230.0	127	5	44	
2010	12	3,881.7	4,223.5	8,105.2	81,968.0					246.1	108	7	28	
2011	1	3,456.8	3,760.0	7,216.9	7,216.9					223.5	107	18	24	
2011	2	2,838.5	3,076.6	5,915.0	13,131.9					196.1	114	21	26	
2011	3	3,333.1	3,597.7	6,930.8	20,062.8					225.1	127	22	31	
2011	4	3,055.3	3,306.2	6,361.5	26,424.2					219.6	146	15	42	
2011	5	3,247.5	3,517.9	6,765.3	33,189.6					251.1	191	7	21	
2011	6	3,285.2	3,522.7	6,807.9	39,997.4					225.3	231	10	30	
2011	7	3,023.3	3,351.9	6,375.2	46,372.6					226.0	220	8	27	
2011	8	3,404.9	3,731.6	7,136.5	53,509.1					235.5	291	9	29	
2011	9	3,222.6	3,486.4	6,709.1	60,218.1					225.4	213	15	35	
2011	10	3,058.6	3,295.3	6,353.9	66,572.1					223.8	234	14	21	
2011	11	3,364.7	3,596.2	6,960.9	73,533.0					224.2	212	8	21	
2011	12	3,382.1	3,626.0	7,008.1	80,541.0					214.0	949	4	18	
TOTAL CITY PERCENTAGE BREAKDOWN BY MATERIAL (Estimated from periodic composition studies)										COMMERCIAL BUSINESS RECYCLE PROGRAM	SPECIAL ITEMS			
	FERROUS						TIN	CONTAM-INANTS	TOTAL w/cont	TOTAL w/o cont	MOTOR OIL (Gallons)	ELEC-TRONICS (units)	APPLIANCES (units)	
	ALUM	METAL	GLASS	MIXED PAPER	NEWS PAPER	PLASTICS								
2011 Total:	734.3	348.6	14,247.1	40,236.2	15,726.3	3,500.8	984.8	4,763.0	80,541.0	75,778.1	2,689.7	3,035	151	325
2010 Total:	745.7	353.4	14,493.9	40,981.2	15,981.3	3,555.6	999.5	4,857.5	81,968.0	77,110.6	2,896.5	3,105	147	483
2009 Total:	750.8	357.3	14,534.9	40,986.1	16,066.7	3,579.2	1,007.7	4,843.5	82,126.2	77,282.8	3,947.9	1,132	156	417
2008 Total:	420.3	257.1	15,216.3	35,869.8	27,489.6	1,959.6	675.8	1,800.2	83,688.6	83,907.9				
2007 Total:	445.6	270.7	16,097.0	37,911.7	29,105.5	2,074.7	716.0	1,899.1	88,520.3	86,621.1				
2006 Total:	435.8	263.7	15,702.5	36,951.7	28,450.2	2,027.0	699.8	1,847.6	86,378.3	84,530.7				
2005 Total:	422.2	251.1	15,170.3	35,673.3	27,528.5	1,961.3	677.6	1,778.5	83,462.8	81,684.3				
2004 Total:	496.4	119.2	13,620.3	32,855.6	27,488.5	1,712.4	853.7	3,006.4	80,152.4	77,146.0				
2003 Total:	476.8	114.2	13,069.8	31,523.3	26,373.1	1,645.9	820.5	2,889.7	76,913.3	74,023.7				
2002 Total:	469.9	111.2	12,849.3	30,971.4	25,915.2	1,622.7	809.4	2,843.0	75,592.1	72,749.2				
2001 Total:	467.5	110.2	12,775.9	30,785.6	25,760.6	1,614.5	805.5	2,825.7	75,145.4	72,319.7				
2000 Total:	555.2	103.3	14,013.8	30,255.8	26,504.6	1,622.0	851.3	2,724.4	76,393.1	73,906.0				
1999 Total:	868.2	78.2	14,877.8	28,518.0	26,710.9	814.5	1,506.3	1,138.7	74,516.3	73,377.6				
1998 Total:	833.0	75.9	14,223.1	26,898.0	25,847.3	794.2	1,475.8	1,122.3	71,271.5	70,149.2				
1997 Total:	809.9	71.0	13,675.5	25,920.0	24,729.9	761.8	1,446.3	1,050.1	68,469.3	67,419.2				
1996 Total:	763.0	72.5	12,776.7	23,152.0	23,810.2	709.5	1,359.1	959.3	63,600.7	62,641.4				
1995 Total:	757.3	71.3	12,949.0	22,844.4	24,208.9	657.8	1,391.3	919.6	63,800.8	62,881.2				
1994 Total:	747.6	66.9	12,532.0	22,980.7	22,552.7	634.9	1,361.5	905.9	61,786.7	60,880.8				
1993 Total:	699.8	NA	11,376.3	21,259.5	20,014.8	557.8	1,257.0	854.4	56,123.7	55,232.1				
1992 Total:	866.1	NA	11,438.2	19,049.1	18,139.6	288.8	1,478.6	1,259.6	52,520.0	51,260.4				
1991 Total:	685.5	NA	9,951.0	20,199.5	16,835.9	268.3	1,447.3	1,004.4	50,392.0	49,387.5				
1990 Total:	895.1	NA	9,325.6	17,702.6	17,731.4	163.1	1,313.1	685.9	47,816.8	47,130.9				
1989 Total:	433.2	NA	8,741.3	15,192.3	15,308.4	88.9	1,279.9	121.0	41,165.0	41,044.0				
1988 Total:	242.3	NA	4,833.6	7,739.7	10,481.4	NA	649.2	39.4	23,985.6	23,946.2				

March 30, 2009: New contracts began. Cleanscapes and Waste Management are contracted haulers.

Jan 2005: Ban on recycle in garbage (except plastics) began

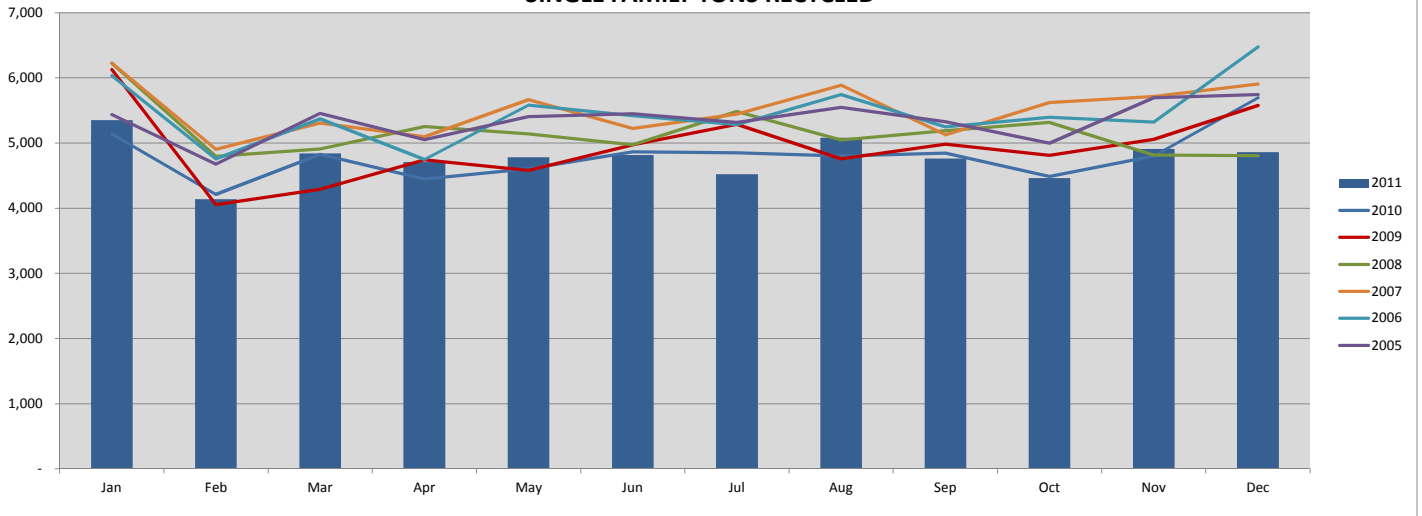
April 2000: New contract begins. Allied Waste and Waste Mangement are contracted haulers

New materials (polycoated paper, aseptic packaging and additional plastics) added to program

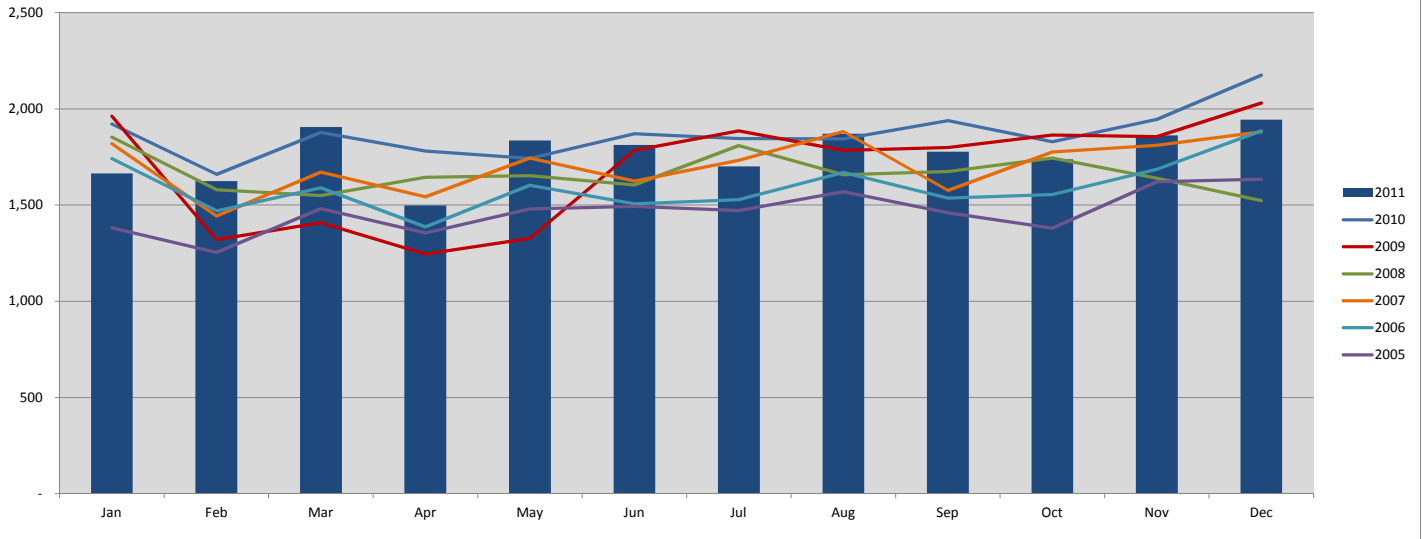
Jan 2000: New Billing system (Banner/CCSS)

<sup>1</sup> Business Recycling tons included in residential tons prior to 2009.

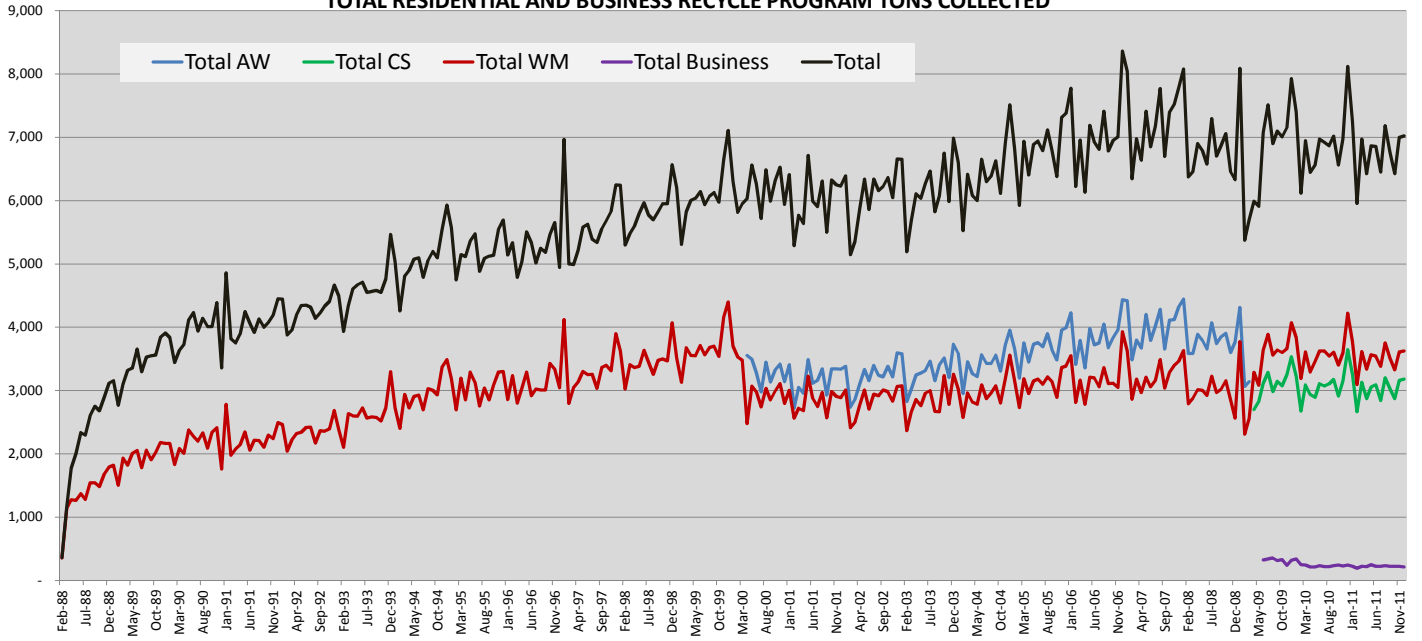
### CITY OF SEATTLE SINGLE FAMILY TONS RECYCLED



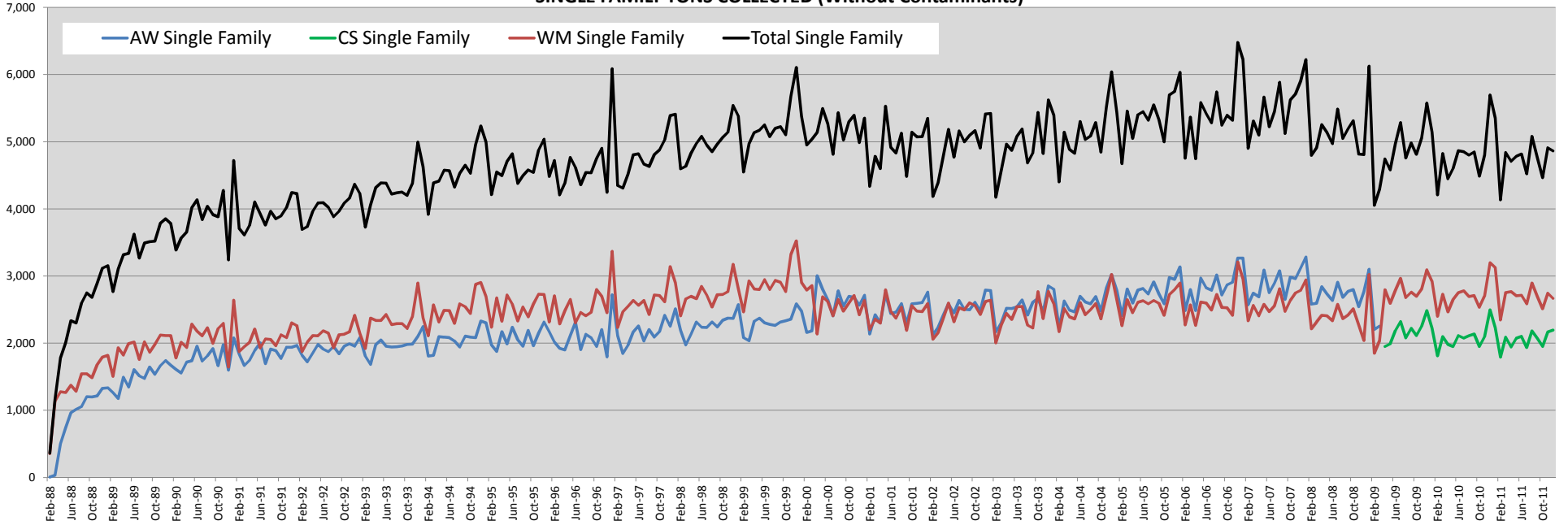
### CITY OF SEATTLE MULTI FAMILY TONS RECYCLED



### CITY OF SEATTLE TOTAL RESIDENTIAL AND BUSINESS RECYCLE PROGRAM TONS COLLECTED



CITY OF SEATTLE  
SINGLE FAMILY TONS COLLECTED (Without Contaminants)



CITY OF SEATTLE  
MULTI FAMILY TONS COLLECTED (Without Contaminants)

