



NOTICE OF UPCOMING WORK

April 25, 2022

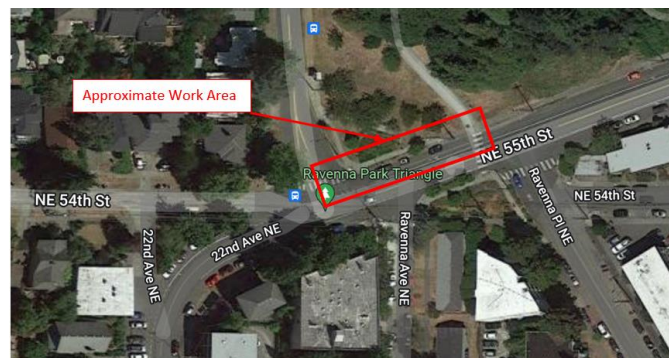
PROJECT DESCRIPTION: INSTALL NEW WATER MAIN SECTION

Seattle Public Utilities (SPU) will soon begin construction to repair portions of the large 430 Pipeline that runs four miles from Volunteer Park to Maple Leaf Reservoir in Seattle. The pipeline was built in the early 1900s and is part of the region's drinking water system.

Construction associated with the 430 Pipeline project includes installing a new section of water main in your neighborhood.

LOCATION:

The 430 Pipeline project is a multisite project. Construction at this site will take place near **NE 54th Street and Ravenna Ave NE** and occur in the sidewalk, planting strip, and street.



SCHEDULE:

Work is scheduled to begin as early as May depending on the availability of construction materials, including concrete, and is expected to last for **6 to 8 weeks**. Crews will typically work weekdays during daytime hours. Upon completion of the work, the sidewalk, planting strip, and street will be restored.

WHAT TO EXPECT DURING CONSTRUCTION:

- Pavement excavation, construction noise, dust, dirt, and vibrations.
- Temporary sidewalk closures
 - Crews will work to provide local access during working hours, but there may be intermittent, brief sidewalk closures to accommodate construction activities.
- Parking restrictions near the work area.
- Slowed vehicle traffic and staging of equipment and construction vehicles near the project area.

FOR MORE INFORMATION, CONTACT:

Andrew Karch at (206) 684-4643 or andrew.karch@seattle.gov.