



CONSTRUCTION WORK HAS STARTED

May 19, 2022

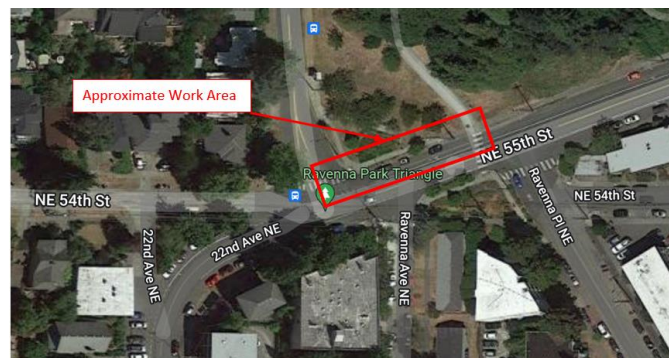
PROJECT DESCRIPTION: INSTALL NEW WATER MAIN SECTION

Seattle Public Utilities (SPU) has started construction to repair portions of the large 430 Pipeline that runs four miles from Volunteer Park to Maple Leaf Reservoir in Seattle. The pipeline was built in the early 1900s and is part of the region's drinking water system.

Construction associated with the 430 Pipeline project includes installing a new section of water main in your neighborhood.

LOCATION:

The 430 Pipeline project is a multisite project. Construction at this site near **NE 54th Street and Ravenna Ave NE** started the week of May 16, and will occur in the sidewalk, planting strip, and street over the next **4 to 8 weeks**.



SCHEDULE:

Crews will work weekdays during from 7 am to 5 pm. Noisy work will begin after 8 am. Upon completion of the work, the sidewalk, planting strip, and street will be restored.

WHAT TO EXPECT DURING CONSTRUCTION:

- Pavement excavation, construction noise, dust, dirt, and vibrations.
- Temporary sidewalk closures
 - Crews will work to provide local access during working hours, but there may be intermittent, brief sidewalk closures to accommodate construction activities.
- Parking restrictions near the work area.
- Slowed vehicle traffic and staging of equipment and construction vehicles near the project area.

FOR MORE INFORMATION, CONTACT:

Andrew Karch at (206) 684-4643 or andrew.karch@seattle.gov.